

# Urban Level of Flood Protection Criteria

*Briefing to the Flood Managers Association*

Paul Marshall

*Division of Flood Management*

*Department of Water Resources*

PUBLIC SAFETY

ENVIRONMENTAL STEWARDSHIP

ECONOMIC STABILITY

# Timeline of ULOP Requirements



- SB 5 – Urban Level of Flood Protection requirements

- AB 1665 – Not penalized by delayed state fund

- SB 1070 – Excluding Fresno area

ULOP Criteria WG

Draft ULOP Criteria

CVFPP Adoption

- SB 1278, AB1965 –  
Reset General Plan/Zoning Ord Deadlines;  
Exempt shallow flooding and local drainage

ULOP Criteria Refinement WG

SB 1278 map released

ULOP Criteria

< 24 M

GP update

< 12 M

Zoning Ord.

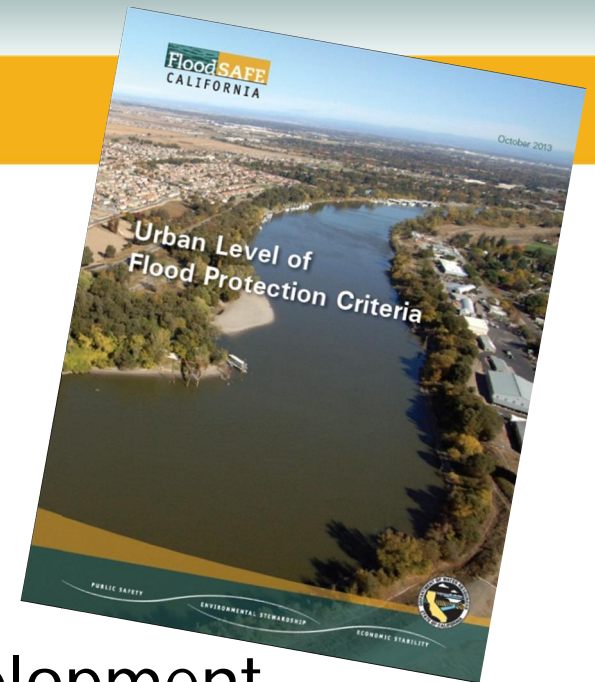
# Urban Level of Flood Protection

*“Urban level of flood protection” means the level of protection that is necessary to withstand flooding that has a 1-in-200 chance of occurring in any given year using criteria consistent with, or developed by, the Department of Water Resources.*

*“Urban level of flood protection” shall not mean shallow flooding or flooding from local drainage that meets the criteria of the national Federal Emergency Management Agency standard of flood protection.*

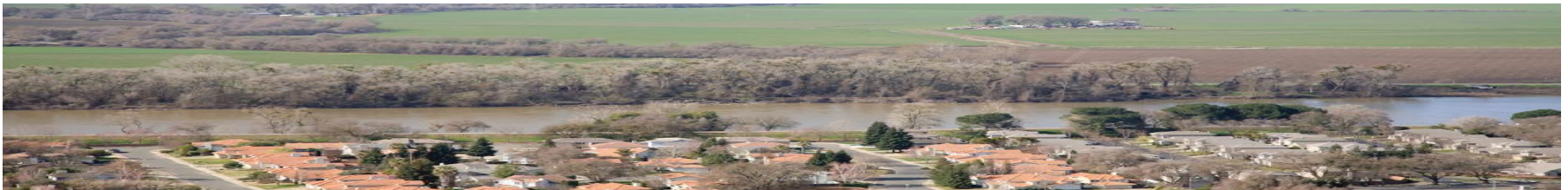
# ULOP Criteria

- Document Contents
  - Introduction
  - Criteria
  - Other Considerations
- DWR's Principles for Criteria Development
  - Satisfy legislative requirements without interfering with local land use authority
  - Provide reasonable details and flexibility
  - Promote prudent floodplain management



# ULOP Criteria Uses

- Cities and counties can use either these criteria or other consistent criteria
- DWR does not have enforcement authority
- DWR may include the ULOP Criteria in future requirements for State funding eligibility, where appropriate
- DWR currently does not have plans to convert the ULOP Criteria into regulations



# Road Map for ULOP Criteria

The California Department of Water Resources

developed the Urban Level of Flood Protection Criteria

(Criteria). For **affected land use decisions**, cities and

See DCN Provisions  
in the Criteria

See LOC Provisions  
in the Criteria

counties in **specific locations** within the Sacramento

and San Joaquin river basins need to make a **finding**

See FND Provisions  
in the Criteria

related to an urban level of flood protection based on

**substantial evidence** in the record. Cities and

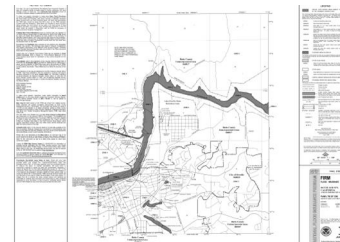
See EVD Provisions  
in the Criteria

counties may use criteria consistent with this Criteria or

apply this Criteria directly.

# ULOP Criteria

- Applicable Location
  - Urban/urbanizing area
  - Within FEMA FIRM
  - Within Sacramento-San Joaquin Valley
  - Within area with potential flood depth greater than 3 feet
  - Within watershed with a contributing area of more than 10 square miles



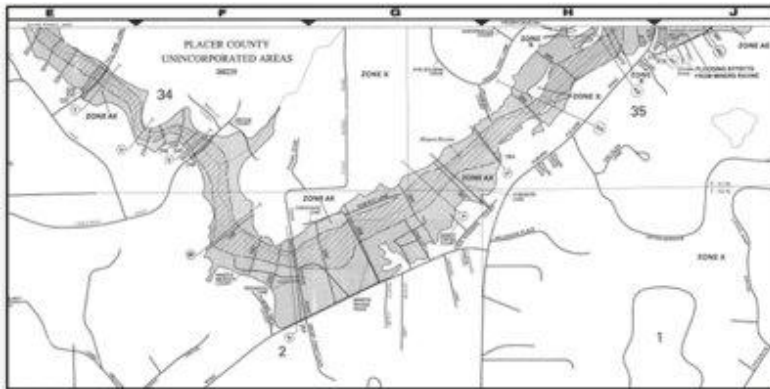
# ULOP Criteria

- Findings
  1. Currently have 200-year flood protection
  2. Imposed conditions
  3. Making adequate progress
  4. Within an undetermined risk area
- Substantial Evidence
  - Depends on type of finding (could include CE report, review from Independent Panel of Experts)
  - A previous finding can be used to support a new finding, when applicable



# Related DWR Assistance

- Developing A Guidance Document for General Plan Amendments
  - All cities and counties within the Sacramento-San Joaquin Valley must update their General Plans by July 2015



# More Information

<http://www.water.ca.gov/floodsafe/urbancriteria/>

Michele Ng  
Central Valley Flood Planning Office  
Department of Water Resources  
[michele.ng@water.ca.gov](mailto:michele.ng@water.ca.gov)